

OUR SUSTAINABLE SOLUTIONS FOR **STRUCTURAL AND INSULATION PROTECTION**

REGUPOL protective layers
and tiles: effective protec-
tion for waterproofing and
insulation



Our products for structural and insulation protection

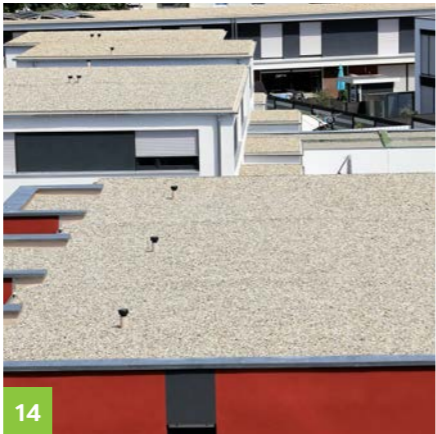
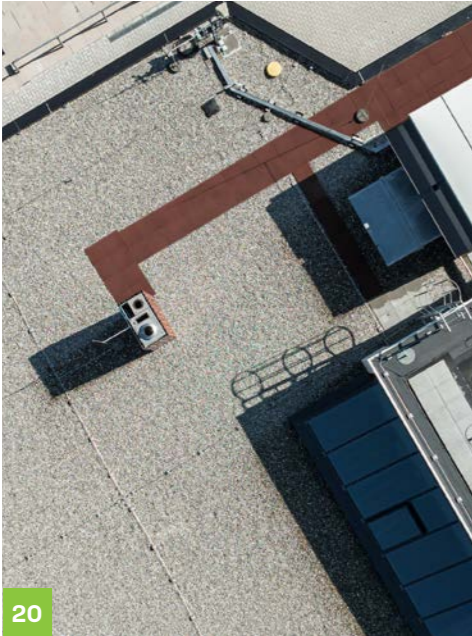
A sustainable business approach combined with the best possible protection for our environment will be even more important in the future. Our sustainable structural and insulation protection products are ideal for the circular economy. Made from recycled materials, they protect flat roofs and roof insulation and are also extremely durable.

You're already planning your next project? Then you've chosen the right partner, because your success is what drives us.

We will work with you to find the right product for the various applications. Whether flat roofs, terraces, structural waterproofing/civil engineering, green roofs, anti-fouling mats or maintenance paths - our **REGUPOL** products offer a solution for every application and the resulting requirements.

You want to know your material requirements for your project?
Just go to our quantity calculator at www.regupol.com

HERE'S WHAT YOU'LL FIND IN THE BROCHURE



06

REGUPOL Construction in numbers

All important facts and figures about our construction products.

08

Applications

Our **REGUPOL** products can be used for a great range of very different applications.

14

Protective layers for flat roofs

Sustainable layers to protect roof seals and waterproofing.

20

Maintenance paths

Improved safety on all roofs.

28

Green roofs

Nature and architecture in unison.

32

Materials

Our products are characterised by a range of different properties.

34

The circular economy at REGUPOL

Our construction products have attained bronze level certification from Cradle to Cradle Certified®.

REGUPOL CONSTRUCTION IN NUMBERS

up to **95%** of material used has been recycled

over **50** years' experience

approx. **4 MIO.** m² of recycling material sold in 2021
- equal to an area covering approx. 780 football pitches
- equivalent to a pathway 1 metre wide and approx. 4000 km long,
e.g. stretching from the west to the east coast of America.

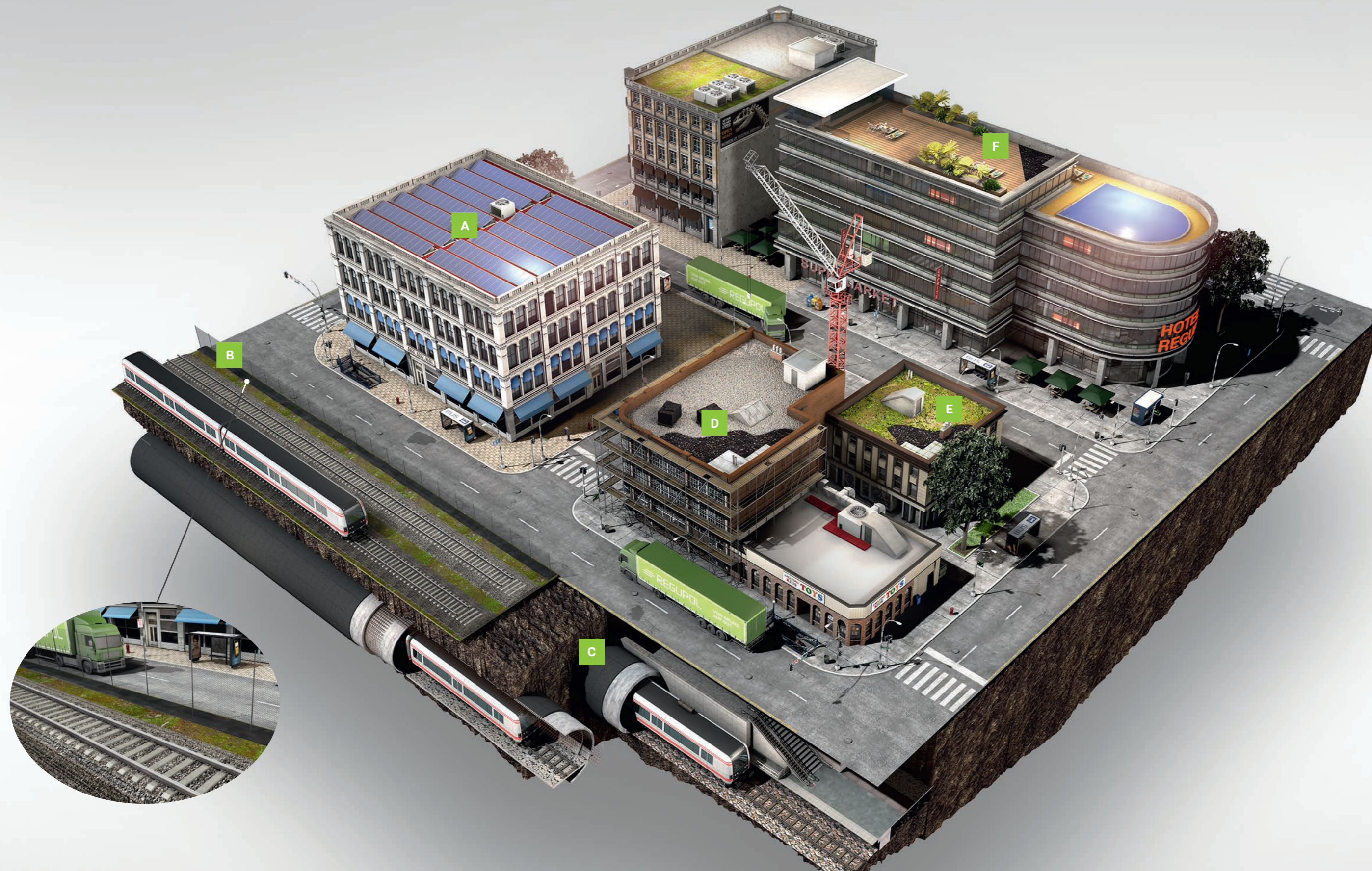
over **30.000** m² of land saved from herbicide treatment, thanks to
REGUPOL vegetation control 767

Your benefit:

Take advantage of our decades of experience all over the world. We will provide you with individual advice and help you select the right product for your application.



APPLICATIONS FOR REGUPOL CONSTRUCTION



Select your application:

- A Maintenance paths
- B Anti-fouling mats
- C Structural waterproofing and civil engineering
- D Protective layers for flat roofs
- E Green roofs
- F Terraces

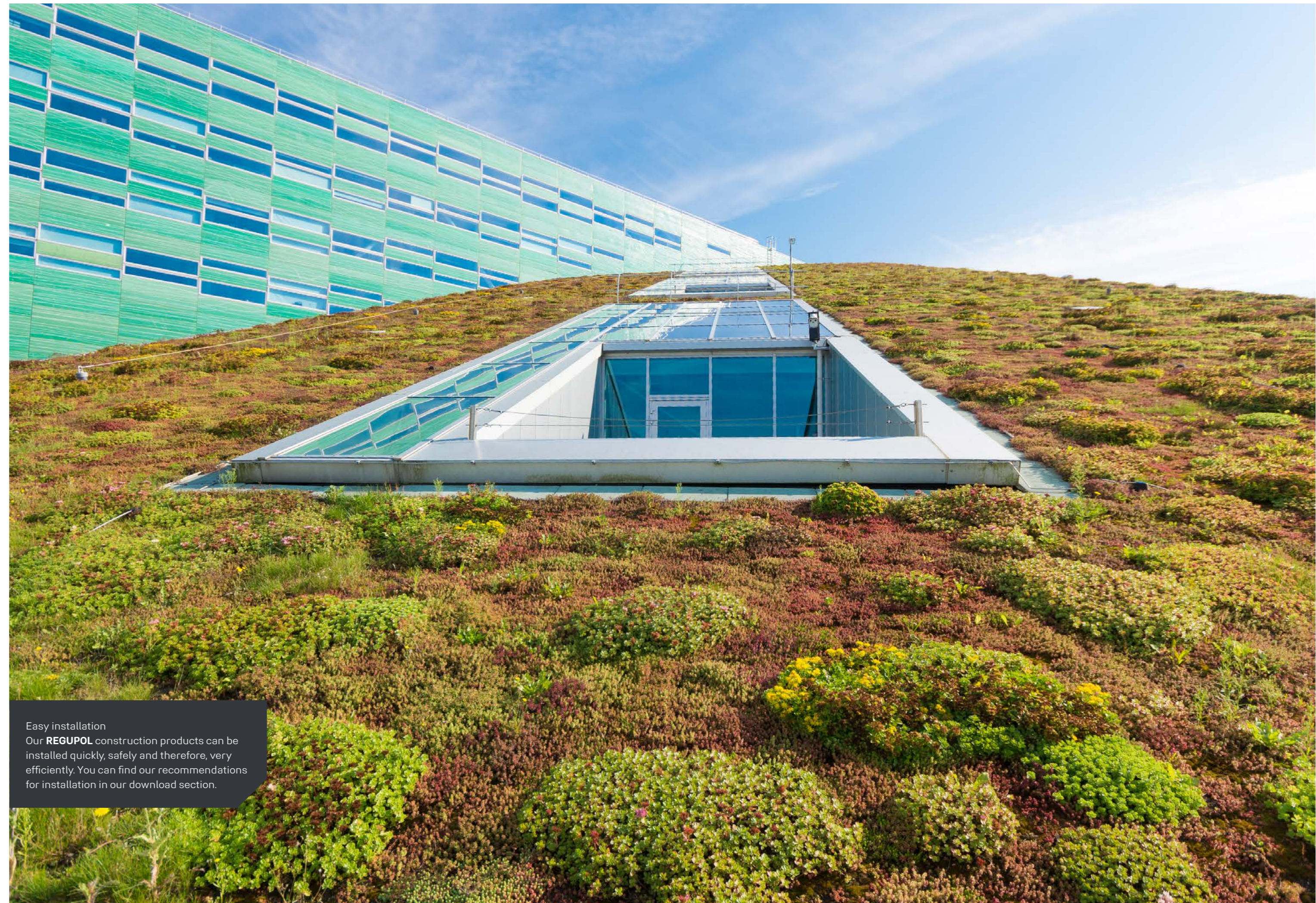
Different applications place different demands on structural and insulation protection.

We will help you to find the right product for your needs. Our extensive range means we can cover a great variety of requirements with our standard products. Alternatively, we can also develop individual solutions and formats together with you.

Depending on the specific application, our products protect the waterproofing and insulation, prevent unwanted vegetation or serve as a water reservoir for green roofs.

Here you can find out more about the different applications our **REGUPOL** products can be used for.

Learn more about our construction products at [construction.regupol.de](https://www.construction.regupol.de) or simply contact us directly: construction@regupol.de | phone +49 2751 803-120



Easy installation
Our **REGUPOL** construction products can be installed quickly, safely and therefore, very efficiently. You can find our recommendations for installation in our download section.



REGUPOL resist provides sustainable protection for waterproofing and insulation

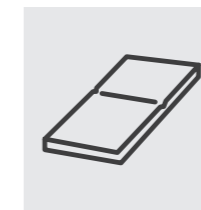
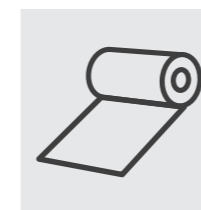


OUR PROTECTIVE LAYERS FOR FLAT ROOFS

Robust and protective:

Their favourable costs and benefits are making flat roofs increasingly popular. However, to guarantee trouble-free use for as long as possible, protecting the waterproofing and thermal insulation on this type of roof is of particular importance. REGUPOL resist offers the best option for protecting the roof waterproofing from mechanical damage during the construction phase and from weather-related stress during the period of use.

For this, REGUPOL provides ideal solutions. Our REGUPOL resist products are protective layers fully compliant with DIN 18531 and flat roof guidelines. They consist of up to 95 % recycled polymer raw materials and PUR-bonded rubber granules from tyre retreading. This makes them a living example for the principles of the circular economy and upcycling. Quick and easy to install, REGUPOL resist products provide permanently elastic, pressure-resistant and age-resistant protection for roof waterproofing from mechanical and weather-related damage. REGUPOL resist is also water-permeable and resistant to heat and cold – all this enables the flat roof to cope with any load. The products offer clear technical, physical and financial advantages over protective screed or protective concrete.



Rolls | Sheets

Permanently elastic | pressure-resistant | durable | water permeable

Products for this application can be found on the following pages.

We supply our REGUPOL resist products in the standard market formats as rolls and tiles.
construction@regupol.de | phone +49 2751 803-120

REGUPOL RESIST STANDARD

PRODUCT DETAILS

THE INTRODUCTION TO PROTECTIVE LAYERS – SIMPLY GOOD



- **REGUPOL resist standard** provides reliable and sustainable protection for flat roof waterproofing and insulation.
- Available in sheets and rolls, depending on specific project requirements.
- Material thicknesses from 6 to 10 mm available from stock, depending on requirements. Other thickness available on request.
- No build up of static charge - antistatic in acc. with EN 1815.
- Resistant to acids and alkalis as far as possible.
- Pressure-resistant, resistant to microbes, ageing and temperature, permanently elastic, water-permeable, open to water vapour diffusion and rot-proof.
- Simple and efficient installation, no need to wait for other roof work to be carried out.

Protective layer compliant with DIN 18531 and ZVDH* flat roof guidelines | ZVDH* Green Building certified | If you require proof of sustainability, please contact us.

* Central Association of German Roofing Contractors

REGUPOL RESIST ALU

PRODUCT DETAILS

ALUMINIUM LAMINATION PREVENTS PLASTICISER MIGRATION



- **REGUPOL resist alu** provides reliable and sustainable protection for flat roof waterproofing and insulation.
- Protection from mechanical, thermal and chemical influences.
- Underside is laminated with an aluminium triplex film to prevent plasticiser migration from non-rubber-compatible waterproofing systems.
- Compatibility guaranteed with all standard building and flat roof waterproofing systems.
- Available in sheets and rolls, depending on specific project requirements.
- 6 mm material thickness in stock, other thicknesses on request
- Simple and efficient installation, no need to wait for other roof work to be carried out.
- Resistant to acids and alkalis as far as possible.
- Pressure-resistant, resistant to microbes, ageing and temperature, permanently elastic, water-permeable, open to water vapour diffusion and rot-proof.

Protective layer compliant with DIN 18531 and ZVDH* flat roof guidelines | ZVDH* Green Building certified | If you require proof of sustainability, please contact us.

* Central Association of German Roofing Contractors

REGUPOL RESIST FIRE

PRODUCT DETAILS

HARD ROOFING



- **REGUPOL resist fire** provides reliable protection for flat roof waterproofing and insulation from mechanical, thermal and chemical influences.
- The flame-retardant finish ensures resistance to flying sparks and radiant heat. The product is therefore classified as 'hard roofing'.
- General building authority approval certificate P-MPA-E-21-506.
- B_{ROOF} (t1) classification in acc. with DIN EN 13501-5, tested according to DIN CEN/TS 1187.
- 8 mm material thickness in stock, other thicknesses on request.
- Reduces the flame load on the flat roof and thus offers installers and building owners additional safety, complying with increased requirements.
- Available in sheets and rolls.
- Simple and efficient installation, no need to wait for other roof work to be carried out.
- Resistant to acids and alkalis as far as possible.
- Pressure-resistant, resistant to microbes, ageing and temperature, permanently elastic, water-permeable, open to water vapour diffusion and rot-proof.

Protective layer compliant with DIN 18531 and ZVDH* flat roof guidelines | ZVDH* Green Building certified | If you require proof of sustainability, please contact us.

* Central Association of German Roofing Contractors

REGUPOL RESIST ALU FIRE

PRODUCT DETAILS

A DOUBLE DOSE OF SAFETY – FLAME RETARDANT AND MIGRATION-FREE



- **REGUPOL resist alu fire** provides reliable protection for flat roof waterproofing and insulation from mechanical, thermal and chemical influences.
- Flame-retardant and has aluminium triplex film laminated on the underside – resistant to flying sparks and radiant heat.
- The aluminium triplex film prevents plasticiser migration between non-rubber-compatible waterproofing systems and the protective layer.
- General building authority test certificate P-MPA-E-21-506.
- B_{ROOF} (t1) classification in acc. with DIN EN 13501-5, tested according to DIN CEN/TS 1187.
- The flame-retardant finish ensures resistance to flying sparks and radiant heat and is therefore classified as 'hard roofing'.
- Pressure-resistant, resistant to microbes, ageing and temperature, permanently elastic, water-permeable, open to water vapour diffusion and rot-proof.

Protective layer compliant with DIN 18531 and ZVDH* flat roof guidelines | ZVDH* Green Building certified | If you require proof of sustainability, please contact us.

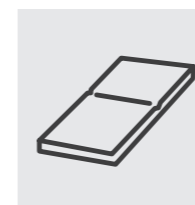
* Central Association of German Roofing Contractors

OUR MAINTENANCE PATHS

Simply safe:

Flat roofs are traditionally used to install building services and ventilation systems that require regular maintenance. So, to mark the safe routes for maintenance personnel and prevent damage to the roof waterproofing in these areas, we developed REGUPOL walkway products.

REGUPOL walkway standard and **REGUPOL walkway alu** are tiles with or without aluminium lamination. The plug-in dowel system makes them easy to install, they do not need to be bonded to the roof waterproofing and they provide slip-resistant walkways or work surfaces in dry and wet conditions. The water-permeable tiles have a drainage system on the underside to ensure water drains away. They are flexible, can be removed without leaving any residue and are reusable. Up to 95 % of the material for these tiles consists of PUR-bonded, recycled and processed rubber granules.



Tiles

Allow good drainage | slip-resistant, B_{ROOF} (t1) in acc. with abP P-MPA-E-21-507

Products for this application can be found on the following pages.

Our **REGUPOL walkway tiles** are available in both standard and special colours. Contact us to find out more:
construction@regupol.de | phone +49 2751 803-120



REGUPOL WALKWAY STANDARD

PRODUCT DETAILS

STAYING SAFE ON FLAT ROOFS



- **REGUPOL walkway standard** is used as a protective layer and to mark maintenance paths.
- Application: constructing and marking maintenance paths and working areas for photovoltaic, solar, antenna or technical systems on flat roofs.
- Lower weight compared to concrete paving slabs enables installation even where static restrictions are in force.
- Can be laid on all rubber-compatible waterproofing systems on flat roofs.
- This high-density material is open to water vapour diffusion, is viscoplastic and protects waterproofing systems from damage.
- The flame-retardant finish ensures resistance to flying sparks and radiant heat. The product is therefore classified as 'hard roofing' (B_{ROOF} t1).
- Safety: resistance to flying sparks and radiant heat reduces fire load on flat roofs.
- Material thickness of 30 and 43 mm, depending on requirements and wind load, available from stock in red and black. Other colours on request.
- Drainage system on the underside to prevent waterlogging.

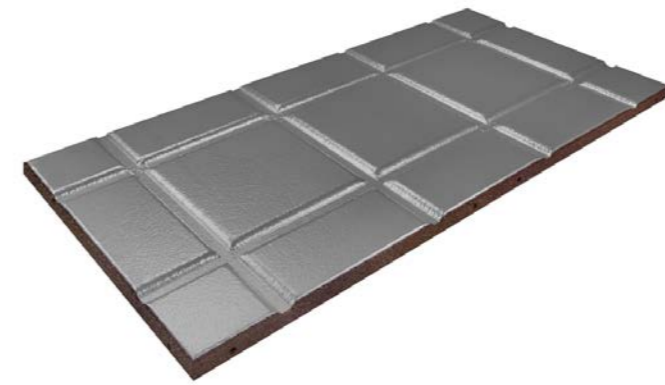
Protective layer compliant with DIN 18531 and ZVDH* flat roof guidelines | ZVDH* Green Building certified | If you require proof of sustainability, please contact us.

* Central Association of German Roofing Contractors

REGUPOL WALKWAY ALU

PRODUCT DETAILS

UNIVERSAL MAINTENANCE PATH FOR ALL WATERPROOFING SYSTEMS

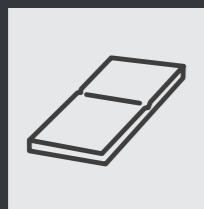


- The protective layer **REGUPOL walkway alu** is used to protect the waterproofing and to mark maintenance paths on flat roofs.
- Laminated on the underside with an aluminium triplex foil.
- Aluminium foil lamination prevents plasticiser migration.
- Use on all standard waterproofing systems is guaranteed.
- Application: constructing and marking maintenance paths and working areas for photovoltaic, solar, antenna or technical systems on flat roofs.
- Lower weight compared to concrete paving slabs enables installation even where static restrictions are in force.
- The flame-retardant finish ensures resistance to flying sparks and radiant heat. The product is therefore classified as 'hard roofing' (B_{ROOF} t1).

Protective layer compliant with DIN 18531 and ZVDH* flat roof guidelines | ZVDH* Green Building certified | If you require proof of sustainability, please contact us.

* Central Association of German Roofing Contractors

COLORS FOR REGUPOL WALKWAY TILES



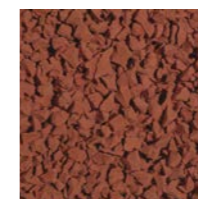
Tiles
Our tiles are available in the classic colours of red and black.

OUR TILES COLORS

REGUPOL walkway standard, REGUPOL walkway alu



Black



Red

Special colors



Green



Grey

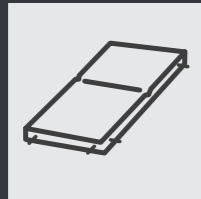
Deviations from the colours shown are possible due to production batches and brochure print.

Other colours are possible.
Contact us to find out more:
construction@regupol.de |
phone +49 2751 803-0



ACCESSORIES

FOR REGUPOL WALKWAY TILES



Plug-in dowel system

Our plug-in dowels are used to form a stable connection between the **REGUPOL walkway tiles** when laid loose. The tiles are pre-drilled on the sides and are fixed together using the plastic dowels. This system makes it easy to lay the tiles precisely and prevents them from slipping out of position.



Single-component PUR adhesive sealant

This adhesive is used to bond the **REGUPOL walkway tiles** together at the sides, in addition to the plug-in dowels. The adhesive is applied in stripes with a bead diameter of around 5 to 7 mm. One cartridge of adhesive is sufficient for a tiled area of around 4 m².

By the way:

You can find additional documents on processing at construction.regupol.de





Green roofs —
Nature and architecture in unison

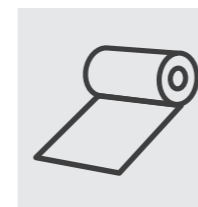


OUR PROTECTIVE AND DRAINAGE LAYERS FOR GREEN ROOFS

In natural harmony: architecture and nature combined.

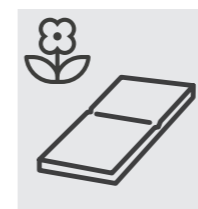
Green roofs are becoming increasingly popular as they not only offer aesthetic benefits, but also make a valuable contribution to ecological construction by providing heat insulation in summer and rainwater storage. Technically speaking, they are also a good choice, as they protect the roof waterproofing and extend the building structure's service life. The green roof acts as protection against the elements as well as sound and heat insulation.

REGUPOL's special layers and tiles provide the perfect substrate for green roofs. We have products for drainage or water-retention to choose from, depending on your requirements. So nothing stands in the way of creating pockets of nature in the city.



Rolls

Provides good drainage | fast installation | durable



Tiles

Very good water storage capacity | sustainable | easy installation

Products for this application can be found on the following pages.

For more information, feel free to contact us:
construction@regupol.de | phone +49 2751 803-120

REGUPOL RESIST GEO

PRODUCT DETAILS

DRAINAGE PLUS WATERPROOFING PROTECTION - NO PROBLEM



- **REGUPOL resist geo** is a combined protective and drainage layer
- Used in the construction of flat roofs and for green roofs.
- Allows water to seep through almost unhindered.
- Protection from rotting and sedimentation.
- Profiled underside to improve water drainage.
- Top side laminated with geotextile as a filter layer.
- Available in rolls.
- Quick and efficient to lay thanks to the geotextile's one-sided overlap.
- Consists of 95 % PUR-bonded rubber granules from retreaded tyres.
- Based on recycled and reprocessed polymer raw materials.
- Prime example of circular economy and upcycling.

Protective layer compliant with DIN 18531 and ZVDH* flat roof guidelines | ZVDH* Green Building certified | If you require proof of sustainability, please contact us.

* Central Association of German Roofing Contractors

REGUPOL COMPOSITE HYDRO

PRODUCT DETAILS

GREEN ROOFS



- **REGUPOL composite hydro** is laid under green roofs.
- Excellent water storage properties.
- Maintains low weight even when saturated.
- Promotes plant growth on green roofs.
- Increases the service life of the waterproofing.
- Profiling on the underside enables excess water to drain freely.
- Consists of PUR-bonded composite foam.
- Over 80 % proportion of recycled and reprocessed raw materials.
- Material and function contributes to sustainable construction.

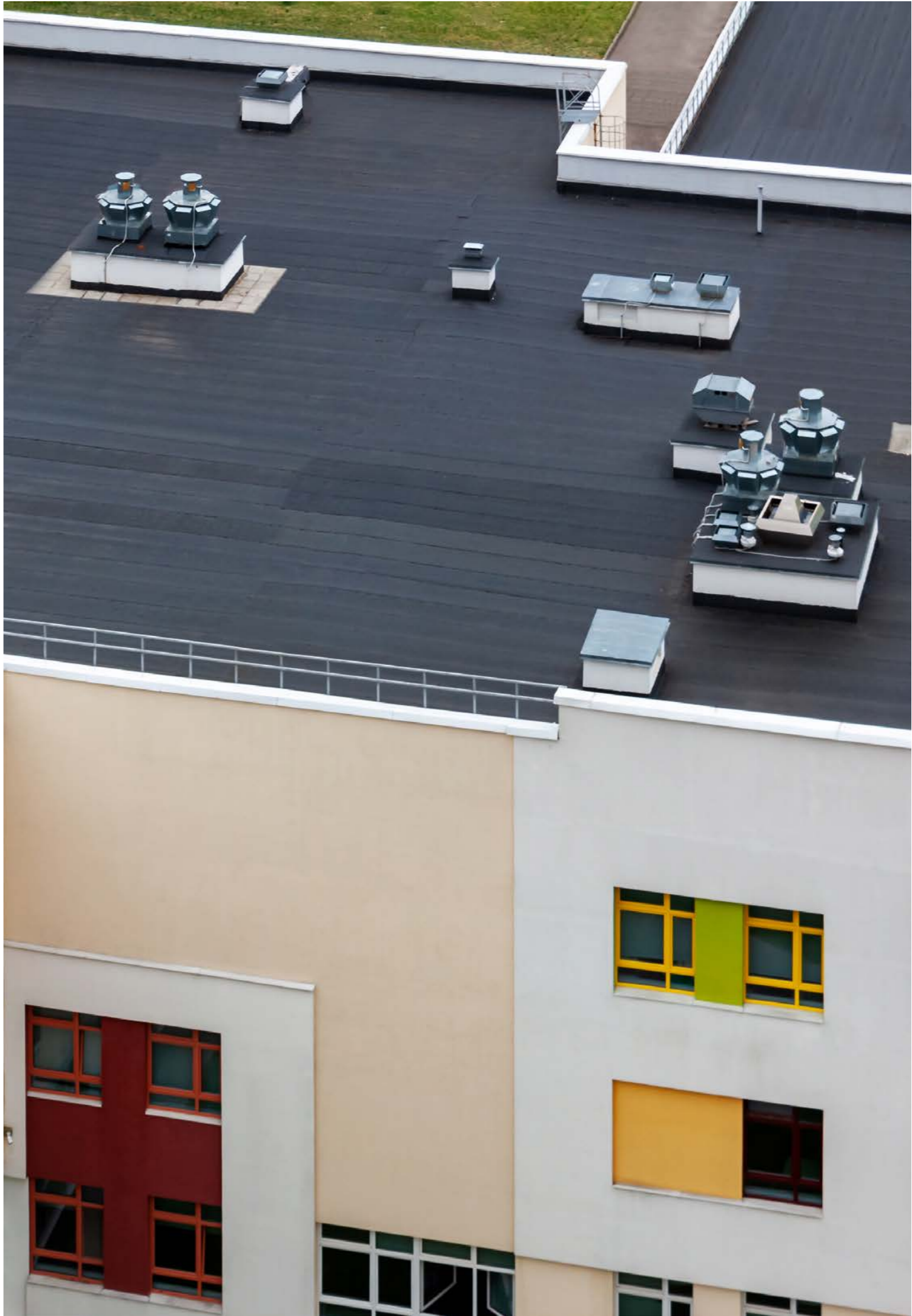
High water storage capacity | good value for money | high sustainability ratio | easy installation

MATERIALS

REGUPOL is a brand that fulfils needs and offers solutions. Depending on the application, we have developed various products with different properties.

Product	Aluminium laminated ¹	Self-adhesive ²	Flame retardant ³	Highly resilient	Allows good drainage	Growth-inhibiting	Growth-promoting
REGUPOL resist standard							
REGUPOL resist alu	x						
REGUPOL resist fire			x				
REGUPOL resist alu fire	x		x				
REGUPOL resist geo					x		
REGUPOL composite hydro							x
For constructing and marking maintenance paths							
REGUPOL walkway standard			x		x		
REGUPOL walkway alu	x		x		x		

¹ Prevents plasticiser migration. Chemically compatible with all types of waterproofing.
² For fixing the protective layer to the solar system
³ Hard roofing | Low flammability: B₂₀₀₀ (t1) classification in acc. with DIN EN 13501-5, tested according to DIN CEN/TS 1187 for resistance to flying sparks, radiant heat
⁴ Comes with general building authority approval certificate.



If you're looking for customized, individual solutions, feel free to contact us: construction@regupol.de | phone +49 2751 803-120

THE CIRCULAR ECONOMY AT REGUPOL

What does Cradle to Cradle stand for?

This concept offers an alternative to our throw-away society, whereby all products, buildings, or services are oriented around a continuous and consistent circular economy.

As a result of the continually changing population, the need for different materials is increasing, and the required resources are becoming increasingly scarce. The objective of C2C is to save these resources and to form closed production circuits right from the beginning, without compromising on quality.

The birth of our **REGUPOL** products begins with a secondary raw material. By avoiding the use of primary raw materials, natural resources and large quantities of CO² can be saved. As such, the C2C process begins with low use of resources. This gives us an edge with regard to the life-cycle approach.

REGUPOL Scorecard

Discipline	Result
Recyclability	GOLD
Social responsibility	SILVER
Responsible use of water	SILVER
Material health	BRONZE
(Use of) renewable energy	BRONZE

The lowest individual certification of these factors determines the overall certification of the product.



Carsten Kreuger
Sales Director | Construction Division

„We have been operating a circular economy and practising upcycling for more than 60 years. I am proud to be able to make my own contribution in this regard at **REGUPOL**. The construction industry is one of the largest generators of waste. It is therefore all the more important to rethink the selection of the building materials to be used. **REGUPOL** has and is the solution to this in many areas.“



29 construction products have attained bronze-level certification from Cradle-to-Cradle Certified®.

CERTIFIED PRODUCTS | CONSTRUCTION

REGUPOL resist standard	REGUPOL solar alu glue
REGUPOL resist alu	REGUPOL solar glue
REGUPOL resist alu glue	REGUPOL solar fire
REGUPOL resist glue	REGUPOL solar alu fire
REGUPOL resist fire	REGUPOL solar special
REGUPOL resist alu fire	REGUPOL solar fire glue
REGUPOL resist special	REGUPOL solar solid
REGUPOL resist fire glue	REGUPOL solar solid fire
REGUPOL resist solid	REGUPOL terrace standard
REGUPOL resist solid fire	REGUPOL terrace alu
REGUPOL resist geo	REGUPOL terrace alu glue
REGUPOL resist hot	REGUPOL terrace glue
REGUPOL resist strong	REGUPOL terrace solid
REGUPOL solar standard	REGUPOL terrace solid fire
REGUPOL solar alu	

For more information on certified products, go to the relevant application and product pages on our website at [construction.regupol.com](https://www.construction.regupol.com).



Cradle to Cradle Certified® is a registered trade mark of the Cradle to Cradle Product Innovation Institute (C2CPII).



Click here for the C2C YouTube video.



REGUPOL Germany GmbH & Co. KG

Am Hilgenacker 24
57319 Bad Berleburg
phone +49 2751 803-0
info@regupol.de

REGUPOL America LLC

REGUPOL Australia Pty. Ltd.

REGUPOL Acoustics Middle East FZE

REGUPOL Schweiz AG

REGUPOL Zebra Athletics LLC

BSW Shanghai CO. LTD.

www.regupol.com