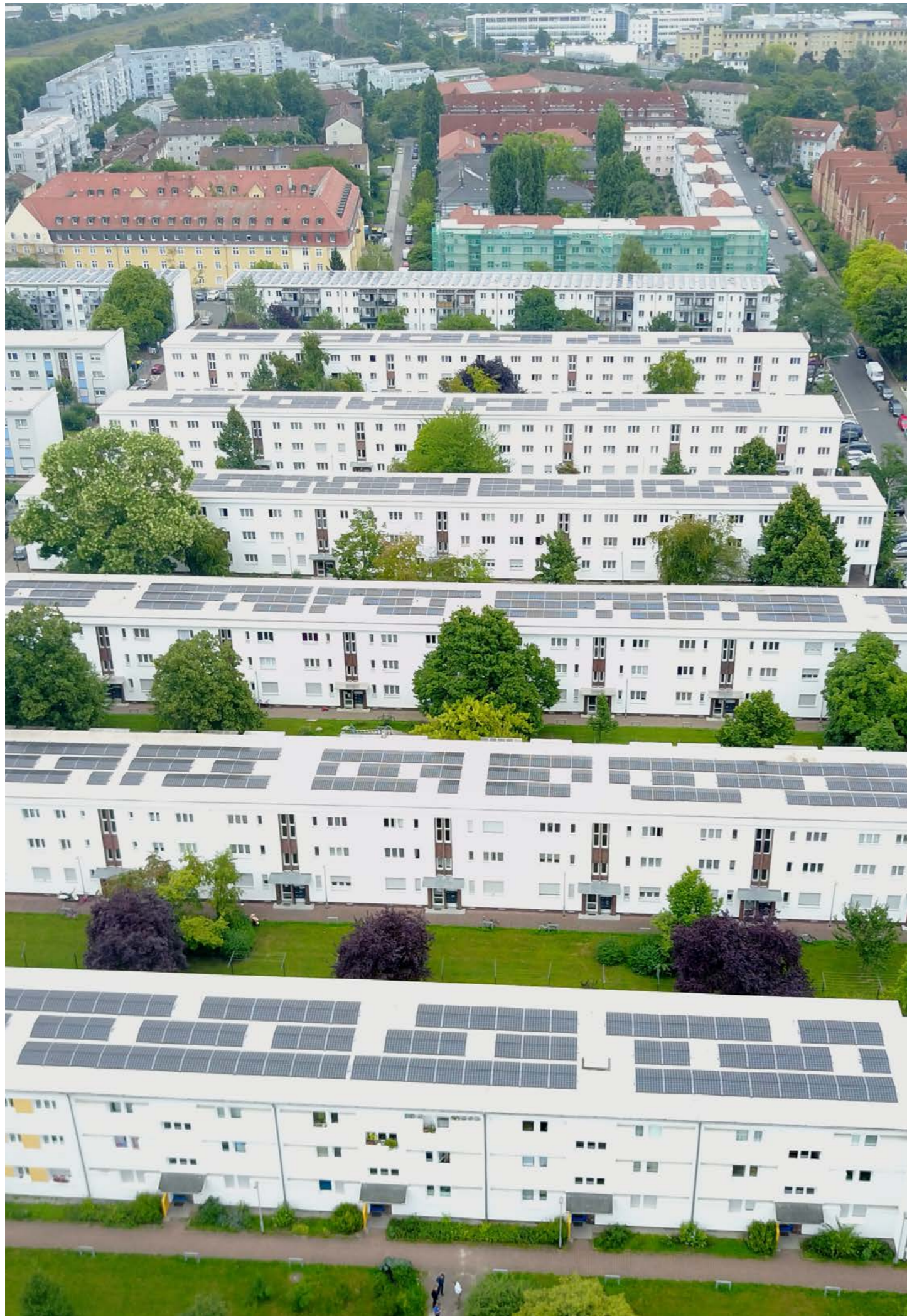


YOUR SPECIALIST FOR PROTECTIVE LAYERS

# PV AND SOLAR, ANTI-FOULING MATS AND MAINTENANCE PATHS

REGUPOL rolls and sheets to  
protect roof waterproofing.



## Customise your projects with REGUPOL

**A sustainable business approach combined with the best possible protection for our environment will be even more important in the future. Our sustainable protective layers and maintenance paths for PV- und solar power systems, as well as our anti-fouling mats, are ideal for the circular economy. Made from recycled materials, they protect flat roofs and roof insulation and are also environmentally friendly and extremely durable.**

Are you planning to redesign a mounting system or perhaps you need a special solution for a protective layer on a flat roof for use with a penetration-free elevated mounting system?

With **REGUPOL**, you have a reliable partner for customized, individual protective layers at your side. Our sustainable **REGUPOL** products for PV & solar and maintenance paths as well as our anti-fouling mats are extremely durable and mechanically highly resilient. A variety of different designs make it possible for to find precisely the right **REGUPOL** protective layer for all commercially available waterproofing and flat-roof mounting systems. We focus on customised solutions, because your success is very important to us.

Here you can find out more about the different applications our **REGUPOL** products can be used for.

**We've got it covered.**

# HERE'S WHAT YOU'LL FIND IN THE BROCHURE



06

## REGUPOL protective layers for PV and solar modules in numbers

All important facts and figures about our Protective layers for PV and solar modules.

08

## Applications

Our **REGUPOL** products can be used for a great range of very different applications

10

## Protective layers for PV and solar modules

Overview of our **REGUPOL** products for PV and solar modules.

22

## Maintenance paths

Improved safety on all roofs.

30

## Anti-fouling mats

Environmentally friendly mats for especially high CO2 savings.

35

## Materials

Our products are characterised by a range of different properties.

36

## The circular economy at REGUPOL

Our construction products have attained bronze level certification from Cradle to Cradle Certified®.

# REGUPOL PROTECTIVE LAYERS FOR PV AND SOLAR

## IN NUMBERS

up to **95 %** of material used has been recycled

over **50** years' experience

approx. **4 MIO** m<sup>2</sup> of recycling material sold in 2021  
- equal to an area covering approx. 780 football pitches  
- equivalent to a pathway 1 metre wide and approx. 4000 km long, e.g. stretching from the west to the east coast of America.

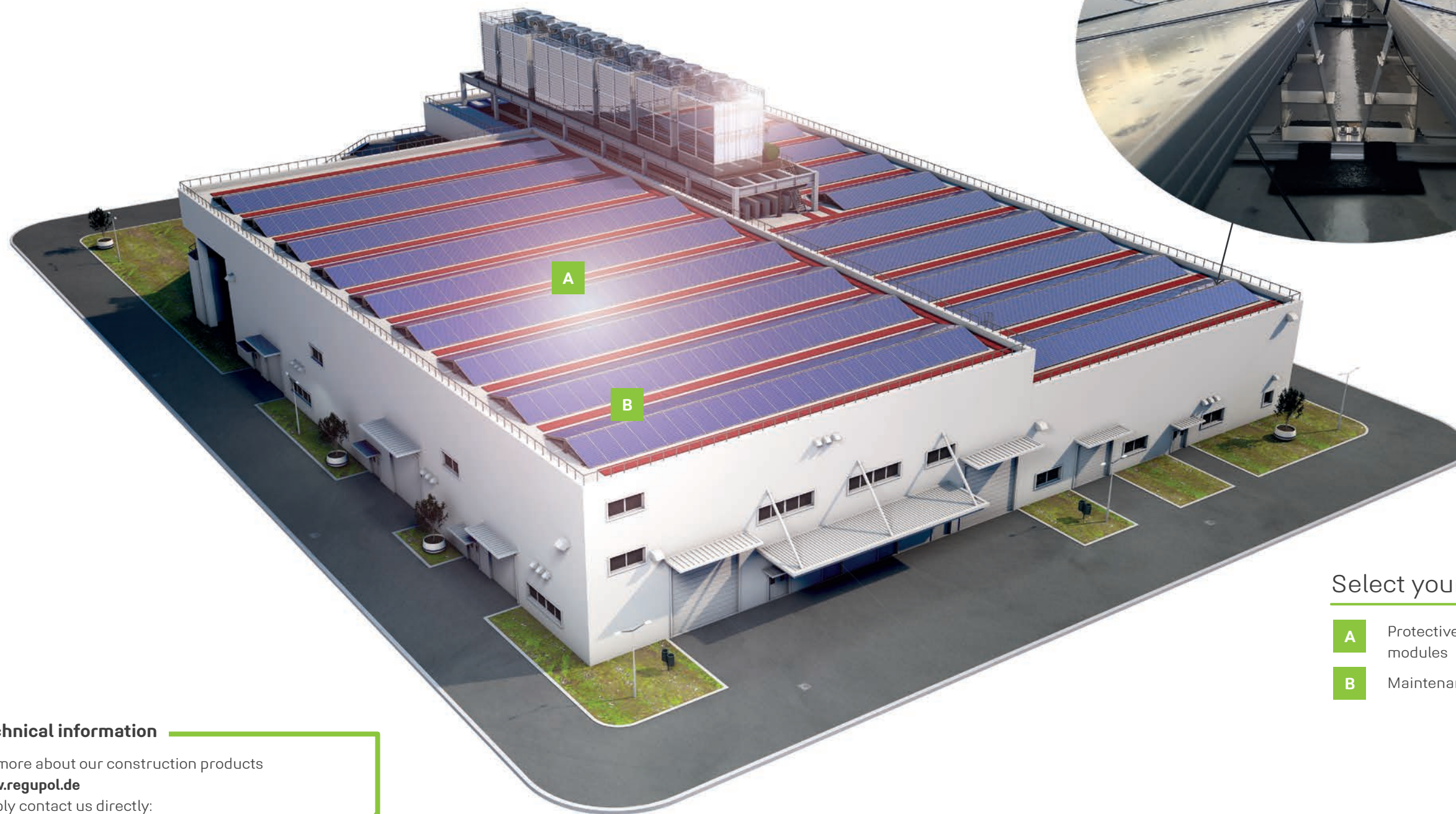
**120** different, fully customized product variations

### Your advantage:

Benefit from our decades of experience in the production of sustainable protective layers for PV and solar installations. We can help you select the protective layer that's right for you.



# APPLICATIONS FOR REGUPOL PROTECTIVE LAYERS FOR PV AND SOLAR MODULES



Select your application:

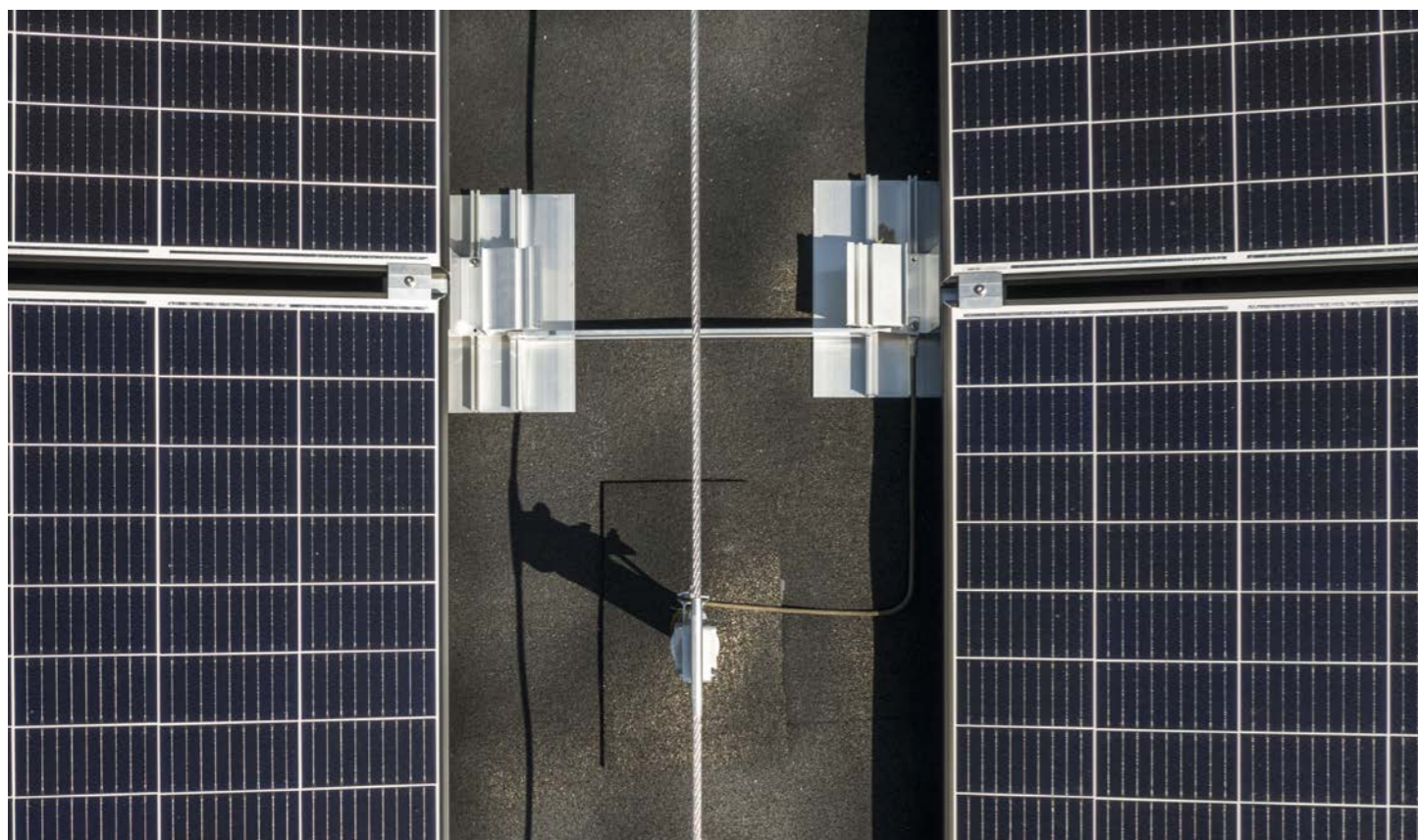
- A** Protective layers for PV and solar modules
- B** Maintenance paths

### More technical information

Learn more about our construction products at [www.regupol.de](http://www.regupol.de) or simply contact us directly: [pv@regupol.de](mailto:pv@regupol.de) | phone +49 2751 803-220



Protect your flat roof waterproofing from damage with REGUPOL solar

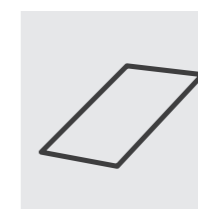
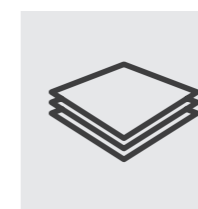
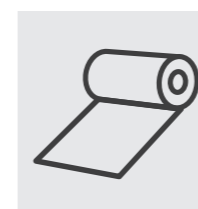


## OUR PROTECTIVE LAYERS FOR PV AND SOLAR

Individual:

It's almost impossible to imagine today's world without renewable energy from PV and solar power systems. This, however, poses a major challenge for the sub-structures these systems stand on, because even when non-penetrating flat roof mounting methods are used, the roof waterproofing systems still need effective and permanent protection.

Our **REGUPOL** solar protective layers are ideally suited for this purpose. Installed quickly and easily, our permanently elastic, pressure and ageing-resistant protective layers provide long-term protection for roof waterproofing. Depending on requirements, **REGUPOL** solar is available in different versions, e.g. with aluminium lamination for non-rubber-compatible waterproofing systems or with a self-adhesive coating or fixing flaps to make installation even easier. The **REGUPOL** solar products consist of up to 95 % PUR-bonded rubber granules taken from tyre retreading. The fact that they are based on recycled and re-processed polymer raw materials makes them a prime example for the circular economy and upcycling.



### Rolls | customized pads | strips

Protective layer compliant with DIN 18531 | permanently elastic | pressure-resistant | resistant to ageing | sustainable

Products for this application can be found on the following pages.

You're looking for customized solutions?  
Feel free to contact us:  
pv@regupol.de | phone +49 2751 803-220

# REGUPOL SOLAR STANDARD

## PRODUCT DETAILS

PHOTOVOLTAIC SYSTEMS ON FLAT ROOFS? OF COURSE!



- **REGUPOL** solar standard is a protective layer for flat roof waterproofing installed under photovoltaic and solar power systems on flat roofs.
- **REGUPOL** solar standard protects roof waterproofing from mechanical damage and thermal influences.
- Extends the service life of roof waterproofing.
- Is individually designed and adapted to suit each individual mounting system.
- Simple and efficient installation.
- Resistant to acids and alkalis as far as possible.
- Height compensating, water-permeable, temperature-resistant.

Protective layer compliant with DIN 18531 and ZVDH\* flat roof guidelines | ZVDH\* Green Building certified | If you require proof of sustainability, please contact us.

\* Central Association of German Roofing Contractors

# REGUPOL SOLAR ALU

## PRODUCT DETAILS

THE SOLUTION FOR PHOTOVOLTAIC MODULES ON FLAT ROOFS WITH NON-RUBBER-COMPATIBLE WATERPROOFING.



- **REGUPOL** solar alu is a special protective layer for non-rubber-compatible flat roof waterproofing installed under photovoltaic and solar power systems on flat roofs.
- Underside is laminated with aluminium Triplex foil.
- Prevents plasticiser migration between non-rubber-compatible waterproofing membranes and the protective layer.
- Compatible with all standard waterproofing systems on the market, including non-rubber-compatible ones, such as soft PVC.
- **REGUPOL** solar alu is individually designed and adapted to suit the mounting system.

Protective layer compliant with DIN 18531 and ZVDH\* flat roof guidelines | ZVDH\* Green Building certified | If you require proof of sustainability, please contact us.

\* Central Association of German Roofing Contractors

# REGUPOL SOLAR FIRE

## PRODUCT DETAILS

INCREASED SAFETY UNDERNEATH YOUR PHOTOVOLTAIC SYSTEM.



- **REGUPOL** solar fire is a protective layer for flat-roof PV systems wherever increased fire protection requirements are in force.
- The fire protection equipment reduces the building's fire load.
- Flame retardant.
- Classified as 'hard roofing' (BROOF t1) in acc. with DIN E 13501-5, resistant to flying sparks and radiant heat.
- Protects waterproofing and insulation under photovoltaic systems from mechanical, thermal and chemical influences.
- Can be customised and tailored to suit the mounting system.
- General building authority approval certificate P-20150703 for the 8 mm version.
- Increases static friction

Protective layer compliant with DIN 18531 and ZVDH\* flat roof guidelines | ZVDH\* Green Building certified | If you require proof of sustainability, please contact us.

\* Central Association of German Roofing Contractors

# REGUPOL SOLAR ALU FIRE

## PRODUCT DETAILS

SAFETY AND RELIABILITY FOR PHOTOVOLTAIC SYSTEMS ON FLAT ROOFS.



- **REGUPOL** solar alu fire is a special protective layer for flat roof waterproofing installed under photovoltaic and solar power systems on flat roofs.
- The flame-retardant finish ensures resistance to flying sparks and radiant heat.
- Meets the requirements for "hard roofing" (BROOF (t1) classification in acc. with DIN EN 13501-5
- Reduces the fire load on flat roofs.
- Underside is laminated with aluminium Triplex foil and prevents plasticiser migration between non-rubber-compatible waterproofing membranes and the protective layer.
- Compatible with all standard waterproofing systems on the market, including non rubber-compatible ones, such as soft PVC.
- Is individually designed and adapted to suit the mounting system.
- Resistant to acids and alkalis as far as possible.
- Simple and efficient installation.

Protective layer compliant with DIN 18531 and ZVDH\* flat roof guidelines | ZVDH\* Green Building certified | If you require proof of sustainability, please contact us.

\* Central Association of German Roofing Contractors



# REGUPOL SOLAR GLUE

## PRODUCT DETAILS

PROTECTIVE LAYER: FAST INSTALLATION.



- **REGUPOL** solar glue is a protective layer for flat roof waterproofing installed under photovoltaic and solar power systems on flat roofs.
- Protects waterproofing systems and thermal insulation from mechanical, thermal and chemical influences.
- Self-adhesive upper side serves as an installation aid, fixing the protective layers to the solar power system's stands.
- Can be fitted to the stand in the factory.
- Quick and easy to install, no need to wait for other roof work to be carried out.
- Designed to suit the mounting system and can be customised.
- Increases static friction.
- Resistant to acids and alkalis as far as possible.

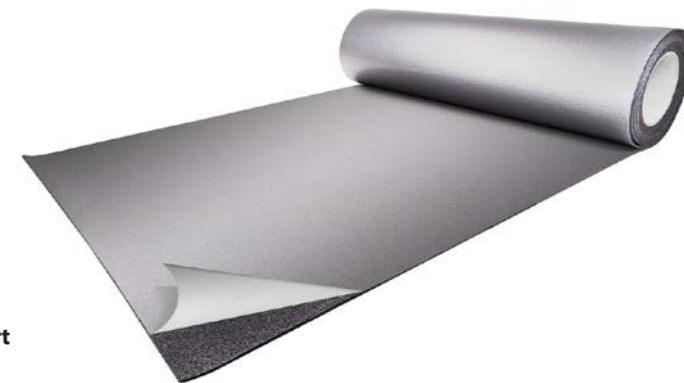
Protective layer compliant with DIN 18531 and ZVDH\* flat roof guidelines | ZVDH\* Green Building certified | If you require proof of sustainability, please contact us.

\* Central Association of German Roofing Contractors

# REGUPOL SOLAR ALU GLUE

## PRODUCT DETAILS

EASY TO INSTALL - COMBINABLE WITH ALL TYPES OF WATERPROOFING.



- **REGUPOL** solar alu glue is a protective layer for flat roof waterproofing installed under photovoltaic and solar power systems on flat roofs.
- Underside lamination with aluminium Triplex foil prevents plasticiser migration.
- The self-adhesive top side makes installation easier.
- Designed to suit the mounting system and can be customised.
- Resistant to acids and alkalis as far as possible.
- Height compensating, resistant to microbes, pressure and temperature, permanently elastic, resistant to ageing, open to water vapour diffusion, water-permeable, rot-proof.

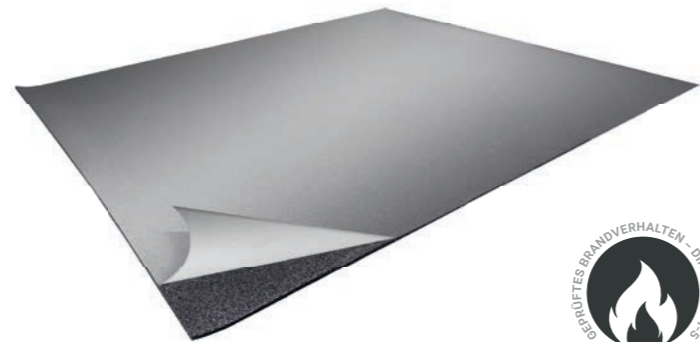
Protective layer compliant with DIN 18531 and ZVDH\* flat roof guidelines | ZVDH\* Green Building certified | If you require proof of sustainability, please contact us.

\* Central Association of German Roofing Contractors

# REGUPOL SOLAR FIRE GLUE

## PRODUCT DETAILS

INCREASED SAFETY, FAST INSTALLATION.



- **REGUPOL** solar fire glue is a special protective layer for flat roof waterproofing installed under photovoltaic and solar power systems on flat roofs.
- Protects waterproofing systems and thermal insulation from mechanical, thermal and chemical influences.
- Material is resistant to flying sparks and radiant heat and, when laid over the entire surface, is classified as 'hard roofing' with its BROOF (t1) classification in acc. with DIN EN 13501-5.
- Self-adhesive upper side serves as an installation aid, fixing the protective layers to the solar power system's stands.
- Quick and easy to install, no need to wait for other roof work to be carried out.
- Designed to suit the mounting system and can be customised.
- General building authority approval certificate P-20150703 for the 8 mm version.

Protective layer compliant with DIN 18531 and ZVDH\* flat roof guidelines | ZVDH\* Green Building certified | If you require proof of sustainability, please contact us.

\* Central Association of German Roofing Contractors

# REGUPOL SOLAR SPECIAL

## PRODUCT DETAILS

THE 'PERFECT' SOLUTION FOR PV MODULES ON FLAT ROOFS.



- **REGUPOL** solar special is a special protective layer for flat roof waterproofing installed under photovoltaic and solar power systems on flat roofs.
- This special version provides protection from plasticiser migration and has a flame-retardant finish.
- Laminated with a self-adhesive installation aid and aluminium Triplex foil; makes installation easier.
- Provides protection from mechanical, thermal and chemical influences.
- Permanently elastic, stable under pressure and resistant to microbes, temperature fluctuations and ageing.
- Water-permeable and open to water vapour diffusion, rot-proof and resistant to acids and alkalis as far as possible.
- Can be adapted to suit the mounting system.
- When laid over the entire surface, it is classed as 'hard roofing' with its BROOF (t1) classification in acc. with DIN EN 13501-5.

Protective layer compliant with DIN 18531 and ZVDH\* flat roof guidelines | ZVDH\* Green Building certified | If you require proof of sustainability, please contact us.

\* Central Association of German Roofing Contractors

# REGUPOL SOLAR SOLID

## PRODUCT DETAILS

HEAVY-DUTY PROTECTIVE LAYER.



- **REGUPOL** solar solid is a flat-roof protective layer, optimised for photovoltaic and solar power systems.
- Provides a secure base with high friction coefficients.
- Material is adaptable, stable under pressure, permanently elastic and resistant to ageing.
- Simple and efficient installation.
- Resistant to acids and alkalis as far as possible.

Protective layer compliant with DIN 18531 and flat roof guidelines | If you require proof of sustainability, please contact us.

# REGUPOL SOLAR SOLID FIRE

## PRODUCT DETAILS

FLAME-RETARDANT AND HIGHLY RESILIENT.



- **REGUPOL** solar solid fire is a highly compressed protective layer, specially designed for use on flat roofs which are subject to heavy loads.
- With its flame-retardant properties and a thickness of 8 mm, the material qualifies as 'hard roofing' and fulfils BROOF (t2) classification in acc. with DIN EN 13501-5.
- Resistant to flying sparks and radiant heat; helps to reduce the fire load on flat roofs.
- Material consists of PUR-bonded butyl rubber, which makes it a robust and durable protection for the roof membrane.
- Protective layer improves the stability of solar installations thanks to high friction coefficients and protects the roof waterproofing from various forms of damage.
- **REGUPOL** solar solid fire can be customized and tailored to the respective mounting system.
- The material is pressure-resistant, permanently elastic, resistant to ageing, water-permeable and open to water vapour diffusion.

Protective layer compliant with DIN 18531 and flat roof guidelines | If you require proof of sustainability, please contact us.



Roof and walkway tiles provide for safety  
Roof and walkway tiles keep you safe

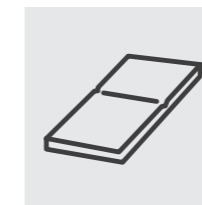


## OUR MAINTENANCE PATHS

Simply safe:

**Flat roofs are traditionally used to install building services and ventilation systems that require regular maintenance. So, to mark the safe routes for maintenance personnel and prevent damage to the roof waterproofing in these areas, we developed REGUPOL walkway products.**

**REGUPOL walkway standard** and **REGUPOL walkway alu** are tiles with or without aluminium lamination. The plug-in dowel system makes them easy to install, they do not need to be bonded to the roof waterproofing and they provide slip-resistant walkways or work surfaces in dry and wet conditions. The water-permeable tiles have a drainage system on the underside to ensure water drains away. They are flexible, can be removed without leaving any residue and are reusable. Up to 95 % of the material for these tiles consists of PUR-bonded, recycled and processed rubber granules.



### Tiles

Allow good drainage | slip-resistant,  $B_{ROOF}$  (t1) in acc. with abP P-MPA-E-21-507

Products for this application can be found on the following pages.

Our **REGUPOL walkway tiles** are available in both standard and special colours. Contact us to find out more:  
construction@regupol.de | phone +49 2751 803-120

# REGUPOL WALKWAY STANDARD

## PRODUCT DETAILS

### STAYING SAFE ON FLAT ROOFS



- **REGUPOL walkway standard** is used as a protective layer and to mark maintenance paths.
- Application: constructing and marking maintenance paths and working areas for photovoltaic, solar, antenna or technical systems on flat roofs.
- Lower weight compared to concrete paving slabs enables installation even where static restrictions are in force.
- Can be laid on all rubber-compatible waterproofing systems on flat roofs.
- This high-density material is open to water vapour diffusion, is viscoplastic and protects waterproofing systems from damage.
- The flame-retardant finish ensures resistance to flying sparks and radiant heat. The product is therefore classified as 'hard roofing' (B<sub>ROOF</sub> t1).
- Safety: resistance to flying sparks and radiant heat reduces fire load on flat roofs.
- Material thickness of 30 and 43 mm, depending on requirements and wind load, available from stock in red and black. Other colours on request.
- Drainage system on the underside to prevent waterlogging.

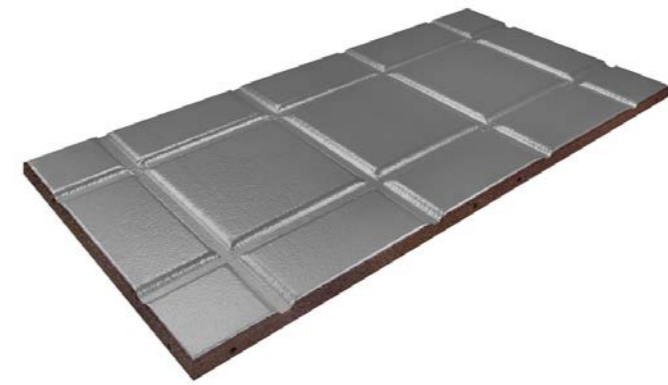
Protective layer compliant with DIN 18531 and ZVDH\* flat roof guidelines | ZVDH\* Green Building certified | If you require proof of sustainability, please contact us.

\* Central Association of German Roofing Contractors

# REGUPOL WALKWAY ALU

## PRODUCT DETAILS

### UNIVERSAL MAINTENANCE PATH FOR ALL WATERPROOFING SYSTEMS

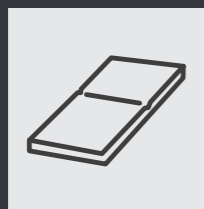


- The protective layer **REGUPOL walkway alu** is used to protect the waterproofing and to mark maintenance paths on flat roofs.
- Laminated on the underside with an aluminium triplex foil.
- Aluminium foil lamination prevents plasticiser migration.
- Use on all standard waterproofing systems is guaranteed.
- Application: constructing and marking maintenance paths and working areas for photovoltaic, solar, antenna or technical systems on flat roofs.
- Lower weight compared to concrete paving slabs enables installation even where static restrictions are in force.
- The flame-retardant finish ensures resistance to flying sparks and radiant heat. The product is therefore classified as 'hard roofing' (B<sub>ROOF</sub> t1).

Protective layer compliant with DIN 18531 and ZVDH\* flat roof guidelines | ZVDH\* Green Building certified | If you require proof of sustainability, please contact us.

\* Central Association of German Roofing Contractors

# COLORS FOR REGUPOL WALKWAY TILES



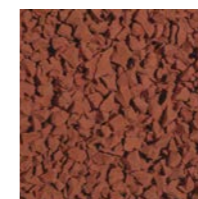
**Tiles**  
Our tiles are available in the classic colours of red and black.

# OUR TILES COLORS

REGUPOL walkway standard, REGUPOL walkway alu

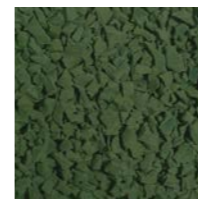


Black



Red

Special colors



Green



Grey

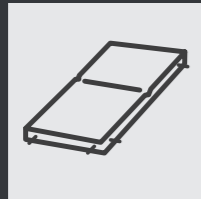
Deviations from the colours shown are possible due to production batches and brochure print.

Other colours are possible.  
Contact us to find out more:  
[construction@regupol.de](mailto:construction@regupol.de) |  
phone +49 2751 803-0



# ACCESSORIES

## FOR REGUPOL WALKWAY TILES



### Plug-in dowel system

Our plug-in dowels are used to form a stable connection between the **REGUPOL walkway tiles** when laid loose. The tiles are pre-drilled on the sides and are fixed together using the plastic dowels. This system makes it easy to lay the tiles precisely and prevents them from slipping out of position.



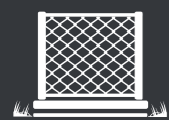
### Single-component PUR adhesive sealant

This adhesive is used to bond the **REGUPOL walkway tiles** together at the sides, in addition to the plug-in dowels. The adhesive is applied in stripes with a bead diameter of around 5 to 7 mm. One cartridge of adhesive is sufficient for a tiled area of around 4 m<sup>2</sup>.

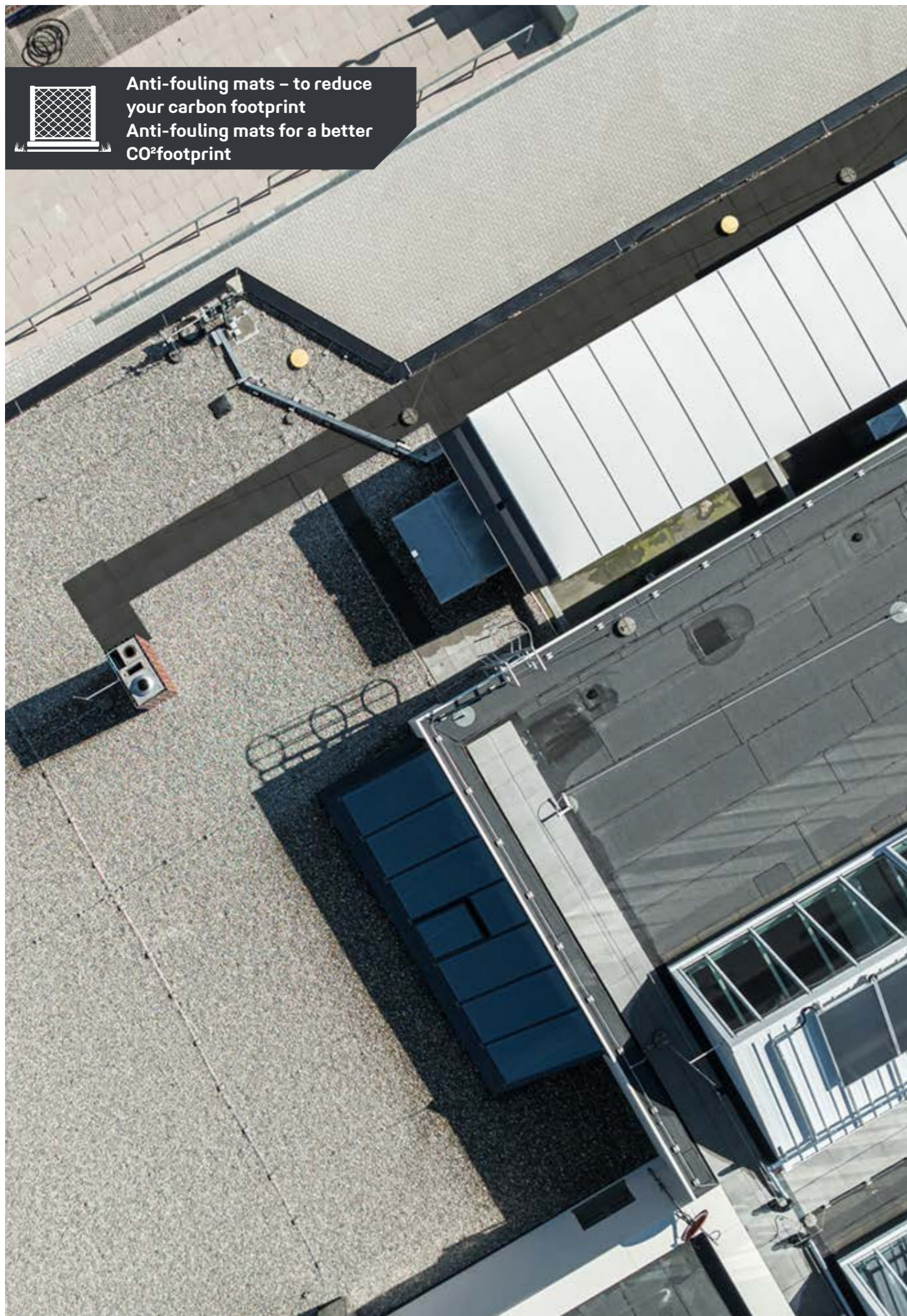
### By the way:

You can find additional documents on processing at [construction.regupol.de](http://construction.regupol.de)





Anti-fouling mats – to reduce  
your carbon footprint  
Anti-fouling mats for a better  
CO<sub>2</sub> footprint



## OUR ANTI-FOULING MATS

Environmentally friendly and reliable prevention of unwanted plant growth.

**It's something we're all aware of: unwanted vegetation in outdoor areas, on the roadside, railway tracks and in many other places. They look unsightly and can even obscure our view of important traffic signs and lane markings.**

To remedy these problems and avoid frequent mowing, **REGUPOL** vegetation control 767 is the ideal solution. Our easy-to-lay anti-fouling mat prevents unwanted vegetation by depriving it of UV light. This in turn eliminates the unnecessary use of herbicides completely.

Thanks to its water-permeable properties, the microbial life in the soil remains preserved. Consequently, this anti-fouling mat makes a valuable contribution to reducing our ecological footprint.



### Rolls

Water-permeable | saves frequent mowing | microbial life is preserved

**Products for this application can be found on the following pages.**

**REGUPOL vegetation control 767 fire** is considered a 'hard roofing' and has BROOF (t1) classification in acc. with abP P-MPA-E-21-505.

If you need more information, feel free to contact us:  
construction@regupol.de | phone +49 2751 803-145



# REGUPOL VEGETATION CONTROL 767

## PRODUCT DETAILS

ECOLOGICAL AND RELIABLE PREVENTION OF UNWANTED VEGETATION.



- **REGUPOL** vegetation control 767 prevents unwanted vegetation by depriving it of UV light.
- The mats are water-permeable, which preserves microbial life and prevents erosion.
- They are also highly compacted, highly resilient and resistant to temperature and ageing.
- Eliminates the use of herbicides and the need for regular mowing.
- Areas of application: railway track and signalling systems, work paths, barrier fences and other fencing systems and wherever unwanted plant growth needs to be prevented.
- In use successfully for over 20 years.
- High slip resistance.
- Supplied in rolls and cut-to-size sheets.
- Simple and efficient installation.

For inaccessible/sensitive areas | Supplied in rolls and cut-to-size sheets | soil micro-organisms remain preserved

# REGUPOL VEGETATION CONTROL 767 FIRE

## PRODUCT DETAILS

PREVENTING UNWANTED VEGETATION EFFECTIVELY AND SUSTAINABLY.



- **REGUPOL** vegetation control 767 fire prevents unwanted vegetation by depriving it of UV light.
- The mats are water-permeable, preserve microbial life and prevent erosion.
- Eliminates the use of herbicides and the need for regular mowing.
- With over 95% recycled content, this is a 'top recycling product'.
- Protects solar energy systems on flat green roofs from unwanted plant growth.
- Makes maintenance and servicing work under photovoltaic systems much easier.
- Prevents grass growth from causing production outages in solar energy systems.
- The material is flame-retardant.
- Resistant to flying sparks and radiant heat in acc. with DIN CEN/TS 1187.
- For inaccessible or sensitive areas.

General building authority approval certificate PMPA-E-21-505 | fulfils fire class BROOF (t1) requirements In acc. with DIN EN 13501-5.

# MATERIALS

REGUPOL is a brand that fulfils needs and offers solutions.

Depending on the application, we have developed various products with different properties.

Product	Optimised for waterproofing types	Aluminium laminated <sub>1</sub>	Self-adhesive <sub>2</sub>	Flame-retardant <sub>3</sub>	Highly resilient
REGUPOL solar standard	rubber-compatible				
REGUPOL solar alu <sup>4</sup>	non-rubber-compatible x	x			
REGUPOL solar alu fire <sup>4,5</sup>	non-rubber-compatible x	x			
REGUPOL solar alu glue	non-rubber-compatible x x	x	x		
REGUPOL solar special <sup>4</sup>	non-rubber-compatible x x x	x	x	x	
REGUPOL solar fire	rubber-compatible x			x	
REGUPOL solar fire glue	rubber-compatible x x		x	x	
REGUPOL solar glue	rubber-compatible x		x		
REGUPOL solar solid*	non-rubber-compatible x				x
REGUPOL solar solid fire* <sup>5</sup>	non-rubber-compatible x x			x	x

For constructing and marking maintenance paths

REGUPOL walkway standard <sup>5</sup>	rubber-compatible x			x	
REGUPOL walkway alu <sup>5</sup>	non-rubber-compatible x x	x		x	

In combination with PV/solar energy modules and green roofs

REGUPOL vegetation control 767 <sup>5</sup>					
REGUPOL vegetation control 767 fire <sup>5</sup>				x	

\*rubber-free formula

<sup>1</sup>Prevents plasticiser migration. Chemically compatible with all waterproofing types.

<sup>2</sup>For fixing the protective layer to the solar energy system.

<sup>3</sup>Hard roofing | low flammability: BROOF (t1) classification in acc. with DIN EN 13501-5, tested according to DIN/CEN/TS 1197 for resistance to flying sparks, radiant heat.

<sup>4</sup>Protected by the German Federal Utility Model.

<sup>5</sup>Has a general building authority approval certificate.



REGUPOL is a member of the  
German Solar Industry Association  
(Bundesverband für Solarwirtschaft).



You're looking for customized solutions?  
Feel free to contact us:  
pv@regupol.de | phone +49 2751 803-0



# THE CIRCULAR ECONOMY AT REGUPOL

## What does Cradle to Cradle stand for?

This concept offers an alternative to our throw-away society, whereby all products, buildings, or services are oriented around a continuous and consistent circular economy.

As a result of the continually changing population, the need for different materials is increasing, and the required resources are becoming increasingly scarce. The objective of C2C is to save these resources and to form closed production circuits right from the beginning, without compromising on quality.

The birth of our **REGUPOL** products begins with a secondary raw material. By avoiding the use of primary raw materials, natural resources and large quantities of CO<sup>2</sup> can be saved. As such, the C2C process begins with low use of resources. This gives us an edge with regard to the life-cycle approach.

## REGUPOL Scorecard

Discipline	Result
Recyclability	GOLD
Social responsibility	SILVER
Responsible use of water	SILVER
Material health	BRONZE
(Use of) renewable energy	BRONZE

The lowest individual certification of these factors determines the overall certification of the product.



**Carsten Kreuger**  
Sales Director | Construction Division

„We have been operating a circular economy and practising upcycling for more than 60 years. I am proud to be able to make my own contribution in this regard at **REGUPOL**. The construction industry is one of the largest generators of waste. It is therefore all the more important to rethink the selection of the building materials to be used. **REGUPOL** has and is the solution to this in many areas.“



29 construction products have attained bronze-level certification from Cradle-to-Cradle Certified®.

### CERTIFIED PRODUCTS | CONSTRUCTION

REGUPOL resist standard	REGUPOL solar alu glue
REGUPOL resist alu	REGUPOL solar glue
REGUPOL resist alu glue	REGUPOL solar fire
REGUPOL resist glue	REGUPOL solar alu fire
REGUPOL resist fire	REGUPOL solar special
REGUPOL resist alu fire	REGUPOL solar fire glue
REGUPOL resist special	REGUPOL solar solid
REGUPOL resist fire glue	REGUPOL solar solid fire
REGUPOL resist solid	REGUPOL terrace standard
REGUPOL resist solid fire	REGUPOL terrace alu
REGUPOL resist geo	REGUPOL terrace alu glue
REGUPOL resist hot	REGUPOL terrace glue
REGUPOL resist strong	REGUPOL terrace solid
REGUPOL solar standard	REGUPOL terrace solid fire
REGUPOL solar alu	

For more information on certified products, go to the relevant application and product pages on our website at [construction.regupol.com](https://www.construction.regupol.com).



**Cradle to Cradle Certified®** is a registered trade mark of the Cradle to Cradle Product Innovation Institute (C2CPII).



Click here for the C2C YouTube video.





**REGUPOL Germany GmbH & Co. KG**

Am Hilgenacker 24  
57319 Bad Berleburg  
phone +49 2751 803-0  
info@regupol.de

**REGUPOL America LLC**

**REGUPOL Australia Pty. Ltd.**

**REGUPOL Acoustics Middle East FZE**

**REGUPOL Schweiz AG**

**REGUPOL Zebra Athletics LLC**

**BSW Shanghai CO. LTD.**

[www.regupol.com](http://www.regupol.com)